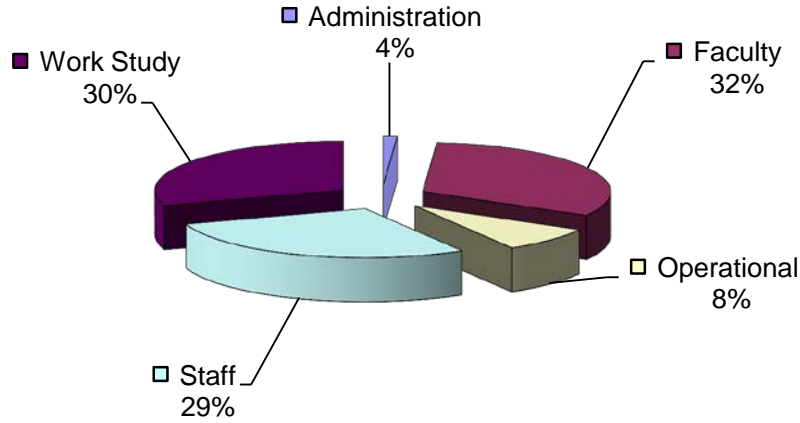


# EASTERN ARIZONA COLLEGE Employees 2015-2016



	Part-Time Employees	Full-time Employees	Total
Administration	0	13	13
Faculty	253	93	346
Operational	58	31	89
Staff	206	102	308
Work Study	326	NA	326
<b>TOTAL</b>	<b>843</b>	<b>239</b>	<b>1082</b>

	Part-Time	Full-Time	Total
Total Number of Instructional Faculty	253	93	346
Total Number Who are Members of Minority Groups	43	11	54
Total Number Who are Women	162	34	196
Total Number Who are Men	91	59	150
Total Number with Doctorate, First Professional, or Other Terminal Degree	14	13	27
Total Number whose Highest Degree is a Master's but not a Terminal Master's	52	63	115
Total Number whose Highest Degree is a Bachelor's	40	12	52
Total Number whose Highest Degree is Unknown or Other	NA	5	5